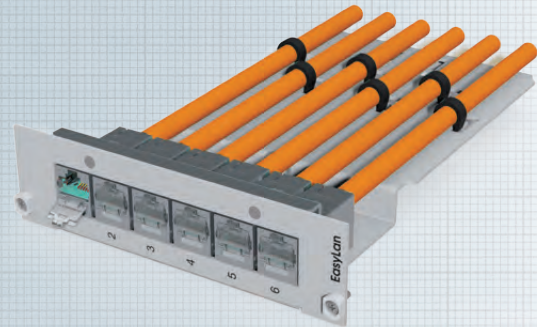


Keystone slot module for module holder

IN STOCK

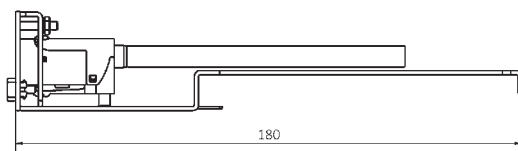
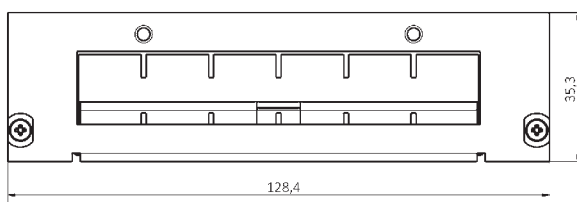


Keystone slot module for loading module carriers. The Keystone slot module can be equipped with up to 6 preLink® or fixedLink® Keystone modules. The Keystone slot module is composed of two levels, and as a result the modules are flush with the front panel. The cable is clamped directly on the insert module housing. 6 single cables or 1 trunk cable can be attached.

Mounting material and Keystone modules are not included!

Properties:

Material	Steel plate Nickel-plated and Heat-treated
Color	Gray, RAL 7035
Installation depth Keystone modules	190 mm For max. 12 Ports divided among 2 slot modules
Range of application	Limited cabinet space, high flexibility, individual extensions, e.g. in data centers
Packaging:	1 piece per box



Description

preLink® / fixLink® Keystone slot module 7TE

Ordering Code

CVE00001E